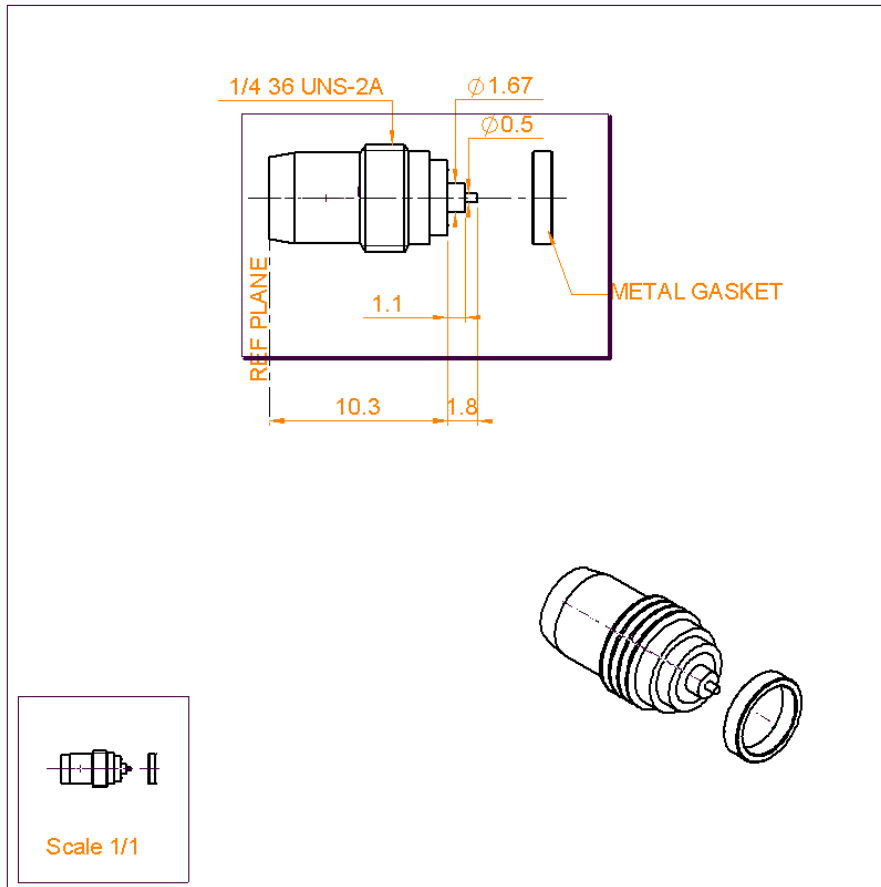


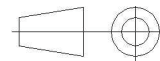
**SCREW MALE RECEPTACLE**  
**HERMETIC - WITH CYLINDRICAL CONTACT**

**R128.639.000**

Series : BMA



All dimensions are in mm.



COMPONENTS	MATERIALS	PLATINGS (µm)
BODY	STAINLESS STEEL	GOLD 0.5 OVER NICKEL 2
CENTER CONTACT	BERYLLIUM COPPER	GOLD 1.3 OVER NICKEL 2
OUTER CONTACT	-	-
INSULATOR	PTFE	-
GASKET	ALUMINIUM ALLOY	-
OTHERS PARTS	-	-
-	-	-
-	-	-

Issue : 0449 B

In the effort to improve our products, we reserve the right to make changes judged to be necessary.



**SCREW MALE RECEPTACLE**

**R128.639.000**

**HERMETIC - WITH CYLINDRICAL CONTACT**

Series : **BMA**

**PACKAGING**

**SPECIFICATION**

Standard	Unit	Other
<b>1</b>	-	<b>Contact us</b>

**ELECTRICAL CHARACTERISTICS**

Impedance		<b>50</b> Ω
Frequency		<b>0-22</b> GHz
VSWR	<b>1.25</b> * +	<b>0.000</b> x F(GHz) Maxi
Insertion loss		<b>0.07</b> √F(GHz) dB Maxi
RF leakage	- (	<b>NA</b> - F(GHz)) dB mini
Voltage rating		<b>500</b> Veff Maxi
Dielectric withstanding voltage		<b>1500</b> Veff mini
Insulation resistance		<b>5000</b> MΩ mini

**ENVIRONMENTAL**

Operating temperature	<b>-65/+125</b> ° C
Hermetic seal	<b>10-5</b> Atm.cm <sup>3</sup> /s
Panel leakage	<b>NA</b>

**OTHERS CHARACTERISTICS**

Assembly instruction **NA**

Others :  
\* de 0 -10 Ghz

**MECHANICAL CHARACTERISTICS**

Center contact retention		
Axial force – Mating end		<b>27</b> N mini
Axial force – Opposite end		<b>27</b> N mini
Torque		<b>NA</b> N.cm mini
Recommended torque		
Mating		<b>NA</b> N.cm
Panel nut		<b>280</b> N.cm
Mating life		<b>1000</b> Cycles mini
Weight		<b>1.230</b> g

Issue : 0449 B

In the effort to improve our products, we reserve the right to make changes judged to be necessary.

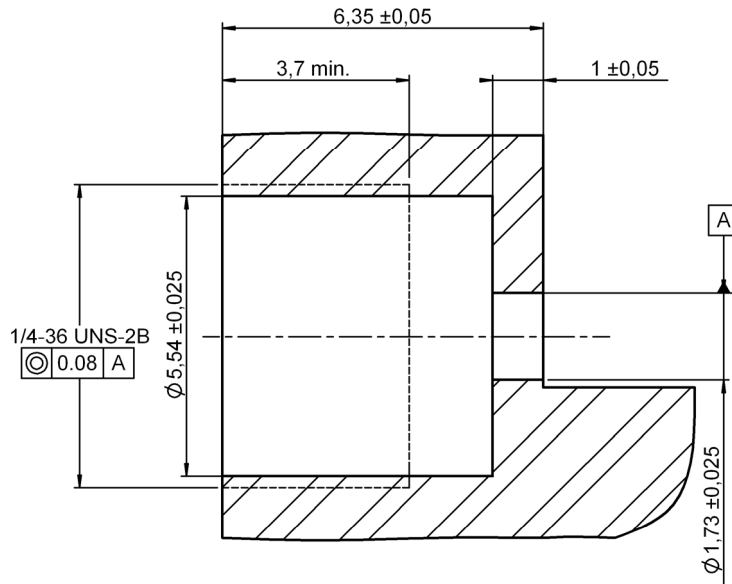


**SCREW MALE RECEPTACLE**  
**HERMETIC - WITH CYLINDRICAL CONTACT**

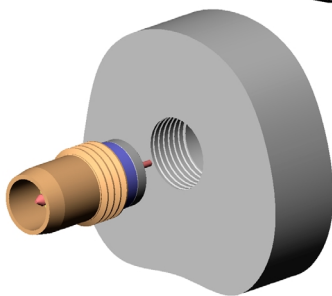
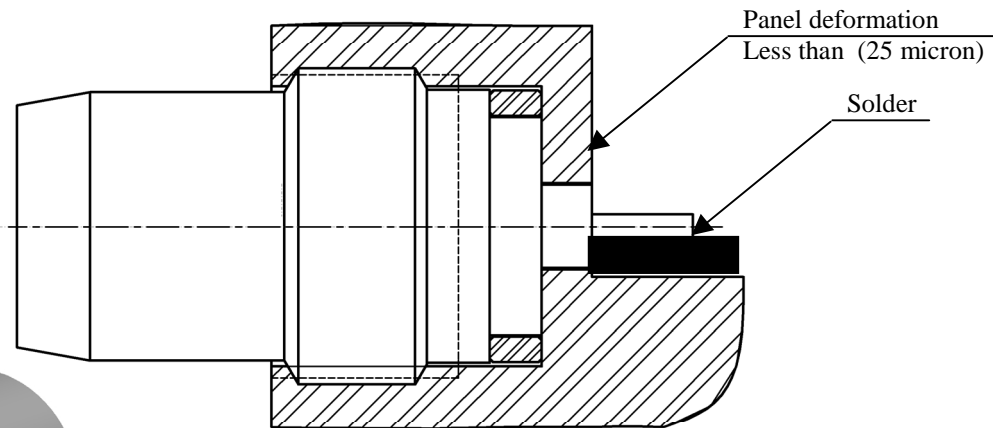
**R128.639.000**

Series : BMA

PANEL DRILLING



MOUNTING HOLE DETAIL



Assemble metal gasket onto connector.  
 Screw both parts into the housing.  
 Tighten the connector up to 280 Ncm torque (use special tooling set RADIALL R282 340 ).  
 Thus the connection hermeticity is guaranteed at  $1 \cdot 10^{-5} \text{ atm.cm}^3/\text{sec}$ .  
 Then solder the pin.  
 Be careful not put too much solder.

Issue : 0449 B

In the effort to improve our products, we reserve the right to make changes judged to be necessary.

